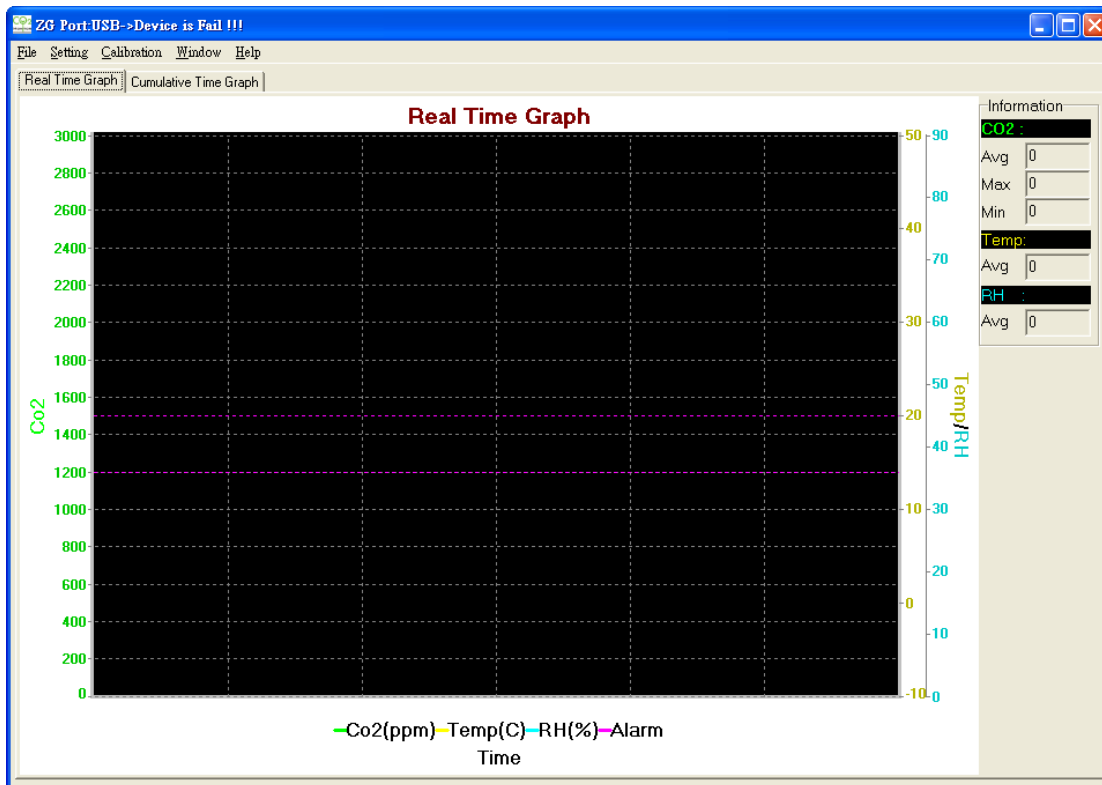


Connect to PC with data log function

1. Run "ZG.exe" software, see the interface,
if the device connect not well the software show "Device is Fail"



2. Confirm and set the communicate mode to USB mode.
Click Parameter Setting of Setting option, open ZG Parameter Setting option and confirm the Interface Setting is "USB".

The screenshot shows the "ZG Parameter Setting" dialog box. It has several sections:

- Interface Settings:** Radio buttons for "USB" (selected), "Rs232", and "Modbus RTU".
- Temperature Settings:** Radio buttons for "C" (selected) and "F".
- CO2 Settings:** Radio buttons for "ppm" (selected), "%", and "mmHg".
- Low Message define:** Radio buttons for "Message 1", "Message 2", "Message 3", "Message 4" (selected), and "Off".
- High Message define:** Radio buttons for "Message 1", "Message 2", "Message 3", "Message 4" (selected), and "Off".
- CO2 Range AL1:** Radio buttons for 600 ppm, 800 ppm, 1000 ppm, 1200 ppm (selected), 1500 ppm, and a text input field with "1200".
- CO2 Range AL2:** Radio buttons for 600 ppm, 800 ppm, 1000 ppm, 1200 ppm, 1500 ppm (selected), and a text input field with "1500".
- Show Line Settings:** Checkboxes for "CO2 Show", "Temp Show", "RH Show", and "Limit Show", all of which are checked.
- Message time:** Radio buttons for 0.5 sec, 1 sec (selected), 2 sec, 3 sec, 4 sec, 5 sec, and 10 sec.

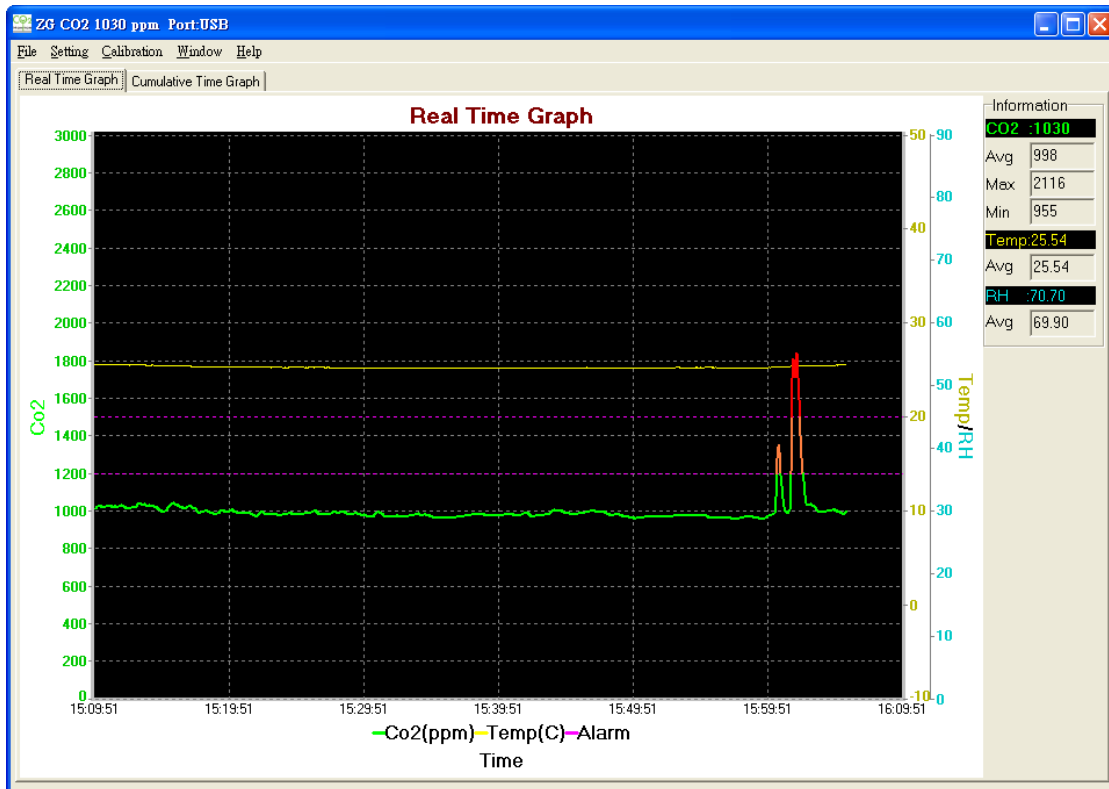
At the bottom, there are buttons for "ZG09 Find", "Save", and "Exit".

3. The device connect with PC and use "ZG.exe" software to record data from it.

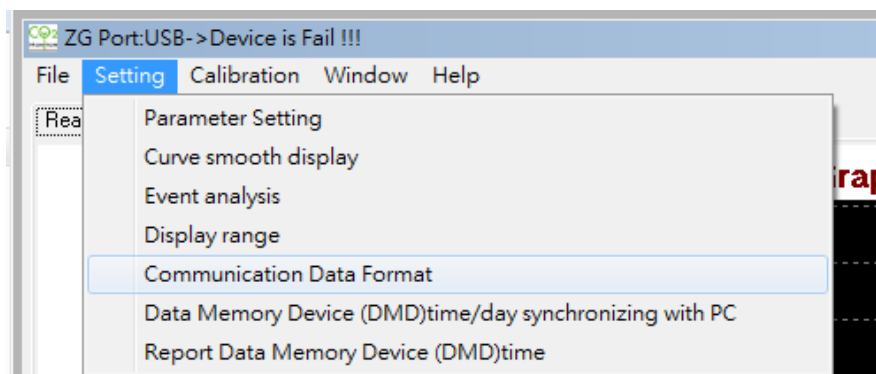
- Connect ok will show "USB",
it will display "CO2 ***ppm Port: USB" after reading the correct data

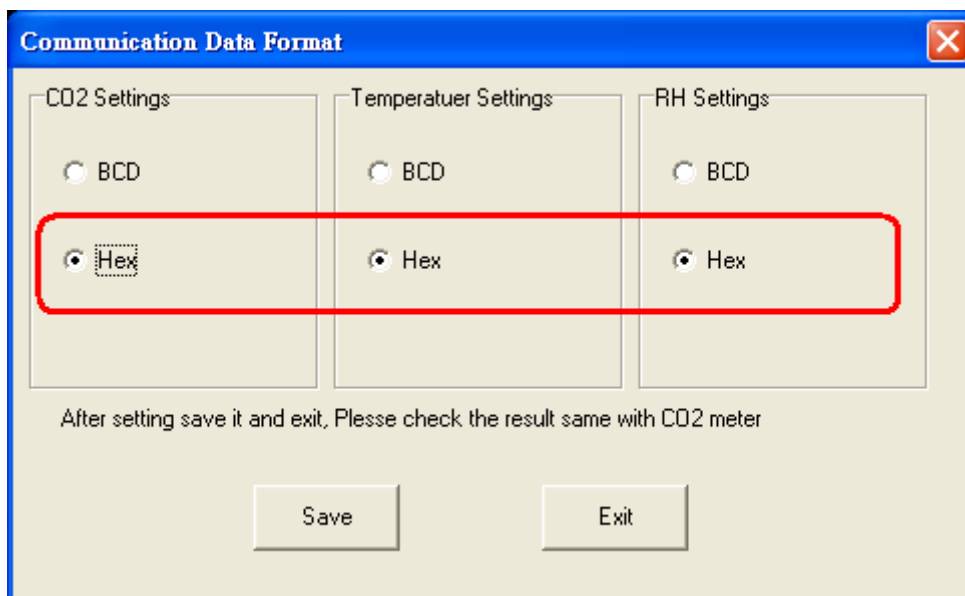


- Software will record CO2 and Temp data and draw a waveform automatically.

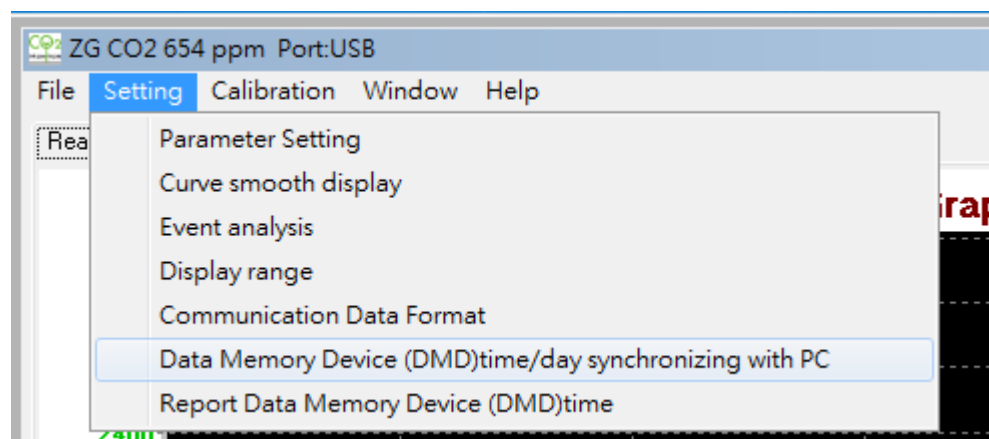


Note: If the data is different from the reading of the device,
please make sure the setting of "Communication Data Format" is Hex

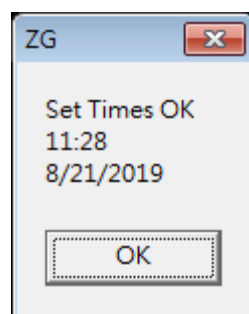




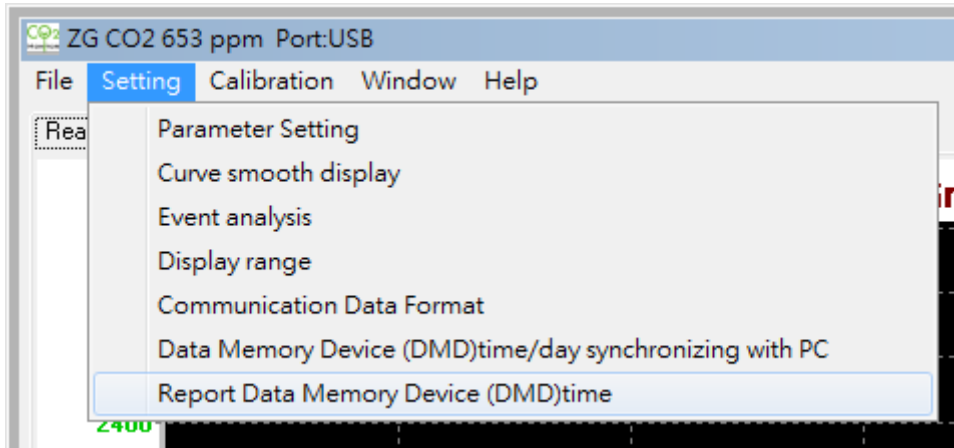
6. "Time" Setting



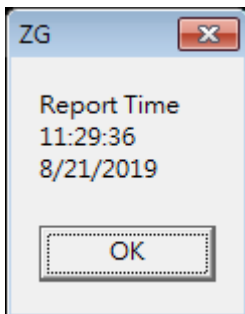
7. OK



8. Access time



9. OK



10. Download the data from micro SD card

Measurement is recorded automatically and preserved in “year” folder, the name of document is <Day>.CSV as following picture shows:

